



What's New? 11th July 24

Enfield Advisory Service for Autism – celebration event for parents 18 th July and summer holiday playground session 15 th Aug	P1
Starting primary school workshop from ECASS	P2
Events from the London Autism Hub	P2
Family Fund – Discover more Support and Discover Digital festival	P3
Free fruit for SEN children for the summer holidays	P3
Play and Leisure – SEN Special Dance Class and Chickenshed Festival of Fun	P4-5
Have your say: Personal Independence Payments consultation	P6

Enfield Advisory Service for Autism

The [Enfield Advisory Service for Autism \(EASA\)](#) supports autistic children and young people (from 0-25 years) and their families.

Book now for their next Cuppa and Chat session 9.30 to 11 am at Russet House School, on Thursday 18th July – a celebration event for parents of children and young people of all ages.

Additionally, they are running a summer holidays playground session at Russet House School on Thursday 15th August 10 am to 2 pm (there is another session on 8th August but this is now fully booked). There are only a few places still available so don't delay!

Details and booking links for all these sessions [here](#).

Summer Holidays Playground Sessions 2024

Thursday 8th August
Thursday 15th August
10:00am - 2:00pm

Russet House School, Autumn Close, EN1 4JA

Bring food and drinks for a picnic*

Speak to a member of the EASA team 10am-12pm

Cold refreshments available 10am-12pm

EASA families of all ages welcome to come and use this outdoor space

admin@enfieldasa.org.uk
07921 298 440

ENFIELD ADVISORY SERVICE FOR AUTISM

Please refer to the website for additional information *Please ensure to take any rubbish with you at the end. A small donation towards the cost of refreshments is appreciated.

Limited parking is available on site.

EASA
Cuppa and Chat

MONTHLY SESSIONS FOR PARENTS AND CARERS

2nd Thursday of the month:
Early Years and Primary-aged children

3rd Thursday of the month:
Secondary and Post-16 children & young people

9:30am–11:00am
Russet House School,
Autumn Close, Enfield, EN1 4JA

ENFIELD ADVISORY SERVICE FOR AUTISM

Please book your space on the EASA website
www.enfieldasa.org.uk

Meet the EASA team
Hear about topical issues
Socialise with other parents
Friendly & relaxed atmosphere

Limited parking is available on site.
A small donation towards the cost of refreshments is appreciated.

Starting primary school: online workshop with ECASS

The 'Rising to Reception' programme is run by the Enfield Communication Advisory Support Service (ECASS) and is aimed at the families of children with communication difficulties who are due to start primary school in September 2024 (i.e. born between 1st September 2019 and 31st August 2020).



Children with communication difficulties can find transitions to new settings challenging, so this series of events aims to help you prepare your child.

The last of this year's Rising to Reception online workshops will be next Wednesday 17th July. This is an opportunity to meet a teacher from a local school in Enfield who will talk to you about your child's first year at school.

You can register for this session using the link in the booklet [here](#).

There are also presentations from previous sessions available on the website [here](#).

If you have any queries, please contact the ECASS team at:

RisingtoReception@enfield.gov.uk

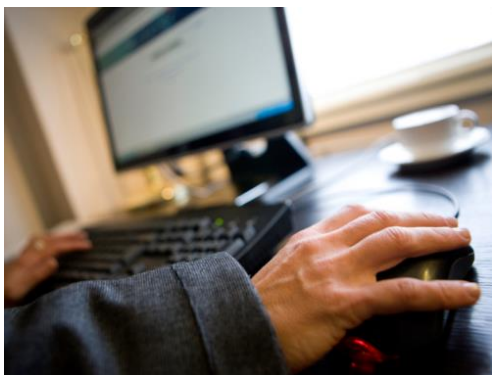
Autism Central: events from the London Autism Hub

The London Autism Central Hub offers guidance to families, carers and personal assistants of autistic people. This includes opportunities to book one-to-one appointments and a range of different workshops. You can see details and booking links [here](#). The next online sessions for parents and carers during July and August are:



- **Supporting Play** – why play is important and tips and ideas for play with your child –Wednesday 7th August 10 am to 12 pm)
- **Transition to Adulthood** – planning for post-school options - Tuesday 16th July 7 – 9 pm
- **Understanding Sensory Processing** – Thursday 18th July 10 am to 12 pm (repeated Friday 9th August 10 am to 12 pm)
- **Understanding overwhelm, meltdowns and shutdowns** Friday 26th July 7 – 9 pm (repeated Tuesday 6th August 7-9 pm)
- **Supporting Siblings and young carers** – understanding how to support siblings and young carers Tuesday 23rd July Wednesday 21st August 10 am to 12 pm

‘Discover More Support’ tool from Family Fund



National charity Family Fund have launched a new 'Discover more support' search tool on their website. It can help you more easily find services best suited to you and your family.

Featuring topics like money and benefits, mental health and wellbeing, education and learning and disability, you can now browse through 130 trusted organisations listed on the new search tool – to find available support services in your local area, or nationally. To use the tool and find out more, [head to Family Fund's website.](#)

Discover Digital Festival from Family Fund

Family Fund are running their free annual online Discover Digital summer festival. Starting Tuesday 30 July, registrations are now open. Tailored to disabled and seriously ill children and young people and their families, the festival offers friendly online sessions where you can learn new skills and socialise during the summer holidays.

With workshops ranging from exploring how to create fun animations, to making a vlog and mastering the power of coding, families can book on as many sessions as they like. To register and find out more details including the full line up of workshops, head to Family Fund's website: www.familyfund.org.uk/discoverdigitalfestival



Summer Holidays – free fruit for SEND families



Summer holidays FREE happy fruit for SEND families! Come along each week to the Zebras Hub to choose some yummy fruits! No referral needed just turn up!

Dates: Wednesday 31st July 11am till 1pm
7th August 11am till 1pm
14th August 11am till 1pm
21st August 11am till 1pm
28th August 11am till 1pm
4th Sept - (Parents collection if back to school)

Zebras Hub: 59b Lancaster Road, Enfield, EN2 0BU – Disabled parking bay to front and side, parking in adjoining roads & Sainsburys (please see any restrictions). Hub phone No: 0203 441 1764 please call when you arrive.

Borras
construction limited

Sponsored by

[Zebra's Charity](#) have received funding to provide free fruit for SEND children for the summer holidays, which you can collect from the hub each Wednesday 11 am to 1 pm. No need to book – just turn up – but note fruit will be provided on a first come first served basis.

See the flyer and [here](#) for details and dates.

Play and Leisure

See our [‘What’s On?’ Guide to Play and Leisure](#) (last updated 10th June) for information about SEND-specific and inclusive leisure activities and days out in and around the Enfield area. We have also begun gathering information on some activities taking place over the summer holidays – see our website [here](#).

SEN Dance class

sen special
DANCE CLASS

Join us for an enjoyable and inclusive weekly dance session, designed specifically for children with Special Educational Needs. This interactive class uses music and movement to help children develop their coordination, balance and build confidence and social skills. .

Starting September 

JOIN NOW

To register email
Theaslanoffschoolofdance@hotmail.com

Chickenshed Festival of Fun

Chickenshed is an inclusive theatre company.

Their Festival of Fun for all the family runs from 28 July – 11 August and offers shows, workshops, activities and more for all the family. See their website at

<https://www.chickenshed.org.uk/hire-us/tales-from-the-shed>

Chickenshed website: <https://www.chickenshed.org.uk/>



Join us this summer at our Festival of Fun

28 Jul - 11 Aug

Tales Big Day Out

28 Jul 10am & 1pm
11 Aug 11.30am & 2pm
Ages 0-7yrs | £10
Free to babies under 12mths

The Tigon and the Liger Yoga

Wed 31 Jul 2pm
Ages 0-7yrs | £5
Free to babies under 6mths

Sunshine Tales from the Shed

31 Jul, 2, 3 & 10 Aug
(see website for times)
Ages 0-6yrs | £7
Free to babies under 6mths

Opera Blurgh

Thu 8 Aug 1.30pm & 3pm
Ages 0-5yrs | £5 | Free to babies under 6mths

Summertime Planet Play

3, 4 & 11 Aug
(see website for times)
Ages 0-3yrs | Adults £10
Babies & children FREE

Encyclopaedia of Happiness

Fri 9 Aug 1.30pm & 3pm
Ages 0-6yrs | £5
Free to babies under 6mths

Gulliver's Travels

1 - 10 Aug
(see website for times)
Ages 3+yrs | £8
Free to babies under 12mths



Step into the magical world of Gulliver's Travels - where the adventure never stops in this fun family musical.

CHICKENSHEd
THEATRE CHANGING LIVES

Chase Side, Southgate, N14 4PE
Box Office 020 8292 9222
www.chickenshed.org.uk
Registered charity no 1012369

SPECIAL OFFERS AVAILABLE
WHEN YOU BOOK FOR MORE THAN ONE EVENT



Have your say: Personal Independence Payments

A consultation on changes to the disability benefit [Personal Independence Payment \(PIP\)](#) closes on Tuesday 23 July.

[PIP](#) is a non-means-tested benefit that helps with the extra costs of disability for people aged 16 to pension age. PIP replaces [Disability Living Allowance \(DLA\)](#) for children when they turn 16 in England, Northern Ireland and Wales. In Scotland, [Adult Disability Payment](#) is replacing PIP.



The Department for Work and Pensions (DWP) has set out options for reforming PIP in England and Wales. The green paper [Modernising Support for Independent Living](#) includes:

- Redesigning assessments to target disabled people and people with a formal diagnosis.
- Making assessments more linked to a person's condition.
- Moving away from a fixed-cash benefit system to vouchers or payments based on people submitting receipts for expenditure.
- Placing more responsibility on local services to better meet disabled people's needs.

Contact (the Charity for families with disabled children) say that they are worried that [a desire to make spending cuts could have a serious impact](#) on disabled young people.

You can [respond to the consultation by completing an online form](#) or email consultation.modernisingsupport@DWP.GOV.UK if:

- You would like to respond via email.
- You have any other enquiries specifically relating to this consultation.

The consultation closes on Tuesday 23 July.

We hope that you have found our newsletter useful. If you have any feedback, or anything that you think we could be telling our families about, please let us know. Our contact details are:

Telephone [07516 662315](tel:07516662315) Email: info@ourvoiceneenfield.org.uk

Website: www.ourvoiceneenfield.org.uk

You can also follow us on our Facebook page at <https://www.facebook.com/ourvoiceneenfield/>

on [Twitter@EnfieldOurVoice](https://twitter.com/EnfieldOurVoice) and on Instagram at

<https://www.instagram.com/ourvoiceneenfield/>

If you no longer wish to receive these emails, and/or would like us to remove your details from our database, please email us and we will remove your details from our mailing list and/or database.

